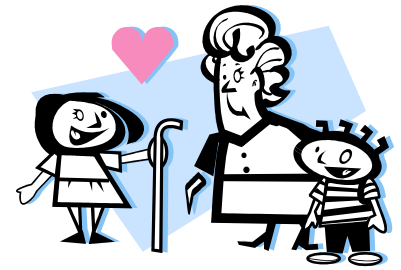




**The Franklin Institute
Science Museum**



FOR IMMEDIATE RELEASE

Contact: Lynda Bramble 215.448.1176
Megan Rothman 215.448.1175

**GRANDPARENT'S HEART HEALTH DAY AT THE FRANKLIN INSTITUTE
FREE ADMISSION FOR GRANDPARENTS!**

Philadelphia, PA –August 29, 2007 - In honor of National Grandparent's Day, the Franklin Institute is throwing a bash that is as informative as it is fun. It's the annual **Grandparent's Heart Health Day** celebration, and it's happening Sunday, September 9th from 11am – 3pm. Celebrating the bond between generations and serving as an important source of health information, Grandparent's Heart Health Day is packed with activities for all ages!

Start the day by making a stethoscope, and use it to listen to your own heartbeat. Pick up some useful information from *The American Heart Association*, *The Komen Fund*, and *The Philadelphia Corporation for Aging*. *Philadelphia Sports Club* fitness trainers will also be here providing small exercise demonstrations to visitors. Stop by the "Heart Bar" inside the Giant Heart exhibit to discover all the pieces of the heart that combine to circulate our blood and then be there to witness a live heart dissection! Explore the newly redesigned Giant Heart exhibit, "A Healthy Interactive Experience", and learn about blood cells, the anatomy of the heart, and diagnosing and treating heart problems. Be sure to check out the revolving hearts at the front of the exhibit, to compare the heart sizes of different animals to a human heart!

Finally, no trip to The Franklin Institute is complete without a walk through the Giant Heart itself, a Philadelphia landmark since its opening in 1954.

Discover all aspects of science and technology at The Franklin Institute: physics in Sir Isaac's Loft: Where Art and Physics Collide, astronomy in Space Command, and anatomy at The Giant Heart: A Healthy Interactive Experience. Visitors can explore science and technology in a hands-on manner that will not only educate but stimulate and inspire as well. For more information please visit www.fi.edu or call 215-448-1200.

###